

Pembroke Road, W8



A beautifully presented and furnished one bedroom flat with wood floors throughout situated on the first floor of this well run portered block, comprising, living room, fully fitted separate kitchen, shower room and bedroom with great wardrobe space. The building benefits from 24 hour porter, lift and communal garden and is ideally located moments from Kensington High Street.

522.00 sq ft | 1 RECEPTION ROOM | 1 BEDROOMS | EN SUITE SHOWER ROOM | 1 BATHROOMS | KITCHEN



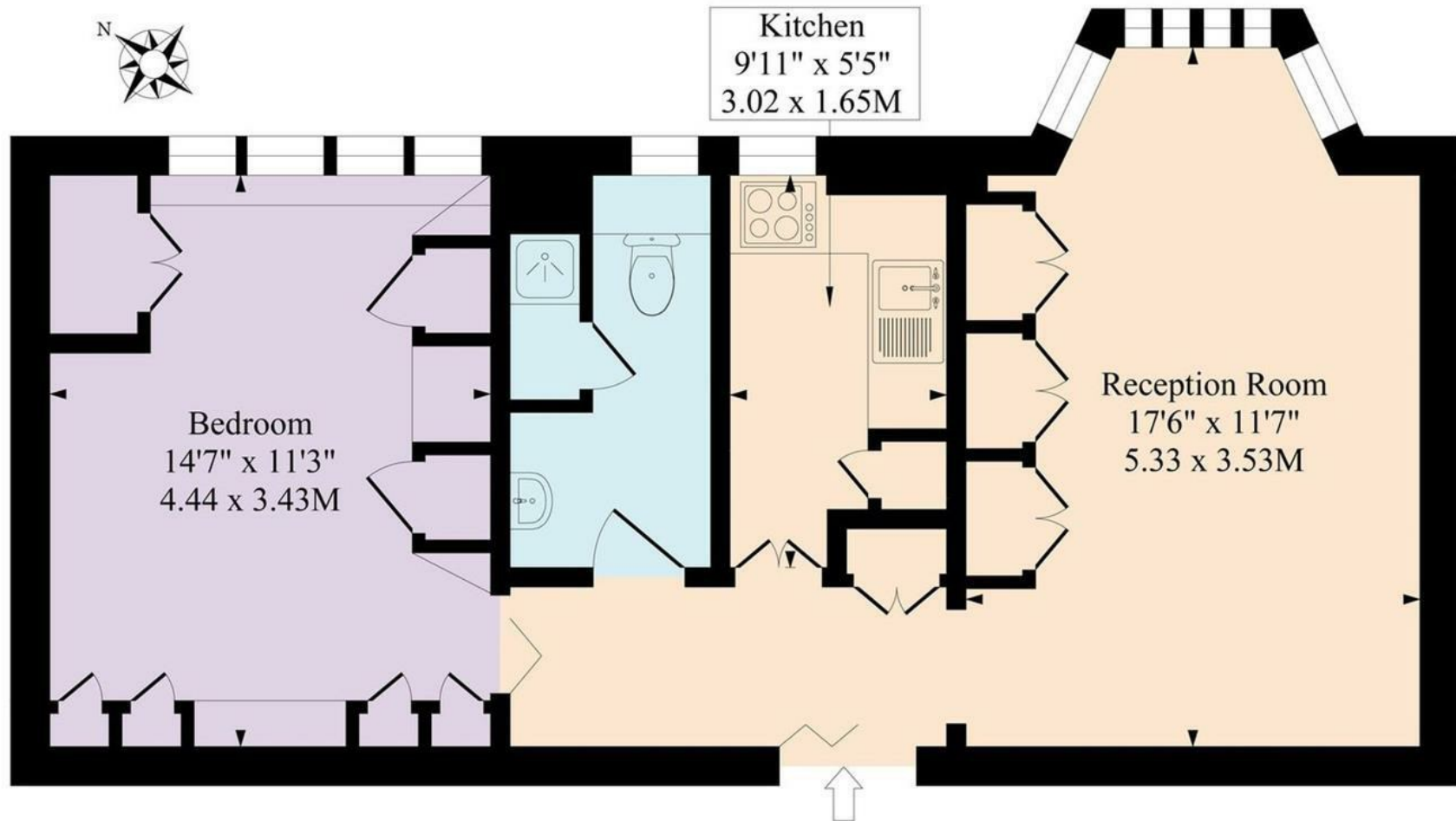
Guide Price £650,000

020 7937 9070
www.croft-international.com

Leasehold



Chatsworth Court, Pembroke Road, London W8



First Floor

Approximate Gross Internal Area

522 Sq Ft - 48.49 Sq M

Measured in according with RICS guidelines. Every attempt is made to ensure accuracy
However all measurements are approximate.
The floor plan is illustrative purposes only and is not to scale

